

Electronic Initiation Device 1

PART NUMBER DESCRIPTION:

EID1

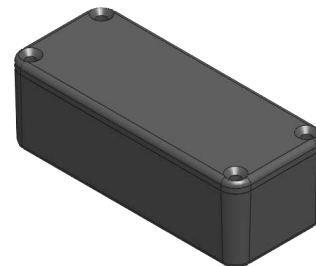
CIRCUIT COUNT	
1	Primary Output only

ENCLOSURE	
-	Non-Flanged, IP54
F	Flanged, IP54
W	Non-Flanged, IP65
FW	Flanged, IP65

INITIATION MODES	
T----	Time Delay only
TP---	Time & Absolute Pressure Threshold
TD---	Time & Differential Pressure Threshold
TG---	Time & Acceleration Threshold
TPG--	Time & Absolute Pressure & Acceleration Thresholds
TPD--	Time & Absolute Pressure & Differential Pressure Thresholds
TDG--	Time & Differential Pressure & Acceleration Thresholds
TPDG-	Time & Absolute Pressure & Differential Pressure & Acceleration Thresholds
----W ¹	Wireless Initiation Module (RF506)

INPUTS	
S	External Switch Contacts for Arming & Triggering (Output BC & 2BC only)
M	Internal Magnetic Switch for Arming/Triggering
V	External Voltage Input for Triggering (Output BC only)
-SB	Externally-Mounted Slide Switch; Select Function as Power, Arming, or Trigger
Not all Inputs can be enabled at once	

OUTPUTS	
BC	Signals via One Bulkhead Connector
2BC	Signals via Two Bulkhead Connectors
WC	Output Cable to 2-Position Connector (MS3116F8-2S)
WB ²	Wire Exit Block only
CB ^{2,3}	Direct Cutter Mount



¹ Option is available when pairing EID units with wireless transmitter and receiver modules.

² Option alone may not be IP rated. Final connections or sealing measures by user may be necessary.

³ Cutter mounts available for Model G2 and Model G4 cutters by Roberts Research Laboratory.

Customer Contact Information

Company:

Contact Name:

Address:

City:

State:

Zip:

Phone:

Fax:

Email:

Website:

Questions or Comments:

Application and Quantity:

The Products may have been developed for commercial applications; as such, may not have been tested for, and ALD Systems, unless otherwise stated, makes no representation or warranty as to conformance with, any military specifications. Additionally, ALD Systems makes no warranty, express or implied, regarding the merchantability of the Products or their suitability or fitness for any particular purpose or use. Any use of the Products for nuclear, chemical or biological weapons, or weapons research, or for any use in missiles, rockets, and/or UAV's of 300km or greater range, or other any activity prohibited by Export Administration regulations is expressly prohibited without the written consent of ALD Systems and without obtaining appropriate US export license(s) when required by US law. Diversion contrary to U.S law is prohibited.